

DC RELAY SETTINGS

SETUP PROCEDURE FOR 935A-1CKO-000G CONTROLER

- 1.GO TO OPERATIONS MENU BY PRESSING BOTH **UP & DN** ARROW KEYS SIMULTANEOUSLY FOR 3 SECONDS
- 2.**ARROW UP 1** TO **CNFG**
3. HOLD SET TO DISPLAY **NO**, **ARROW UP 1** TO **YES** – RELEASE
- 4.**IN** SHOULD APPEAR – **ARROW UP 1** - **TAG** APPEARS - RELEASE
- 5.HOLD SET & **ARROW UP** UNTIL SCREEN IS BLANK - RELEASE
- 6.HOLD BOTH ARROW KEYS FOR 3 SECONDS FOR MAIN SCREEN TEMP. DISPLAY - RELEASE
- 7.GO BACK TO OPERATION MENU – HOLD BOTH **UP & DN** ARROW KEYS SIMULTANEOUSLY FOR 3 SECONDS
- 8.**ARROW DOWN 1** TO **PID** - RELEASE
- 9.HOLD SET TO DISPLAY **NO** & **ARROW UP 1** TO **YES** - RELEASE
- 10.**PB H** SHOULD BE DISPLAYED
- 11.PUSH SET & **ARROW DN** TO **0** - RELEASE
- 12.**ARROW DN 1** TO **HYSH** – PUSH SET TO DISPLAY **3** – **OK** - RELEASE
- 13.**ARROW DN 1** TO **CAL** – PUSH SET & **ARROW DN** TO **-21** - RELEASE
- 14.PUSH BOTH **UP & DN** ARROW SIMULTANEOUSLY TO RETURN TO MENU

START HERE FOR MERCURY TO DC CHANGE ARROW TO OE1 STEP 22

- 15.GO BACK TO MENU - **UP & DN** ARROW SIMULTANEOUSLY FOR 3 SECONDS
 - 16.**ARROW UP 1** TO **CNFG** - RELEASE
 - 17.HOLD SET TO DISPLAY **NO** & **ARROW UP 1** TO **YES** - RELEASE
 - 18.**IN** SHOULD BE DISPLAYED – PUSH SET TO SEE **j** – **OK** – RELEASE
 - 19.**ARROW DN 1** TO SEE **C-F** DISPLAYED. PUSH SET TO SEE **F** – **OK** - RELEASE
 - 20.**ARROW DN 1** TO **RL** - PUSH SET TO SEE **32** - **OK** – RELEASE
 - 21.**ARROW DN 1** TO **RH** – PUSH SET & **ARROW DN** TO **250*** - RELEASE
 - 22.**ARROW DN 1** TO **OE 1** – PUSH SET & **ARROW DN 1** TO DISPLAY **HEAT** & RELEASE
 - 23.**ARROW DN 1** TO **OE2** – PUSH SET TO SEE **NONE** – **OK** – RELEASE
 - 24.**ARROW DN 1** TO **DISP** – PUSH SET TO SEE **AC** – **OK** – RELEASE
 - 25.**ARROW DN 1** TO **FAIL** – PUSH SET TO SEE **BPLS** – **OK** – RELEASE
 - 26.**ARROW DN 1** TO **SLOC** – PUSH SET TO SEE **NO** - **OK** – RELEASE
 - 27.**ARROW DN 1** TO **TAG** – PUSH SET & **ARROW DN 1** TO **PCOA** – RELEASE
 - 28.PUSH BOTH **UP & DN** ARROW SIMULTANEOUSLY TO RETURN TO MENU
- CABINET SHOULD START HEATING**

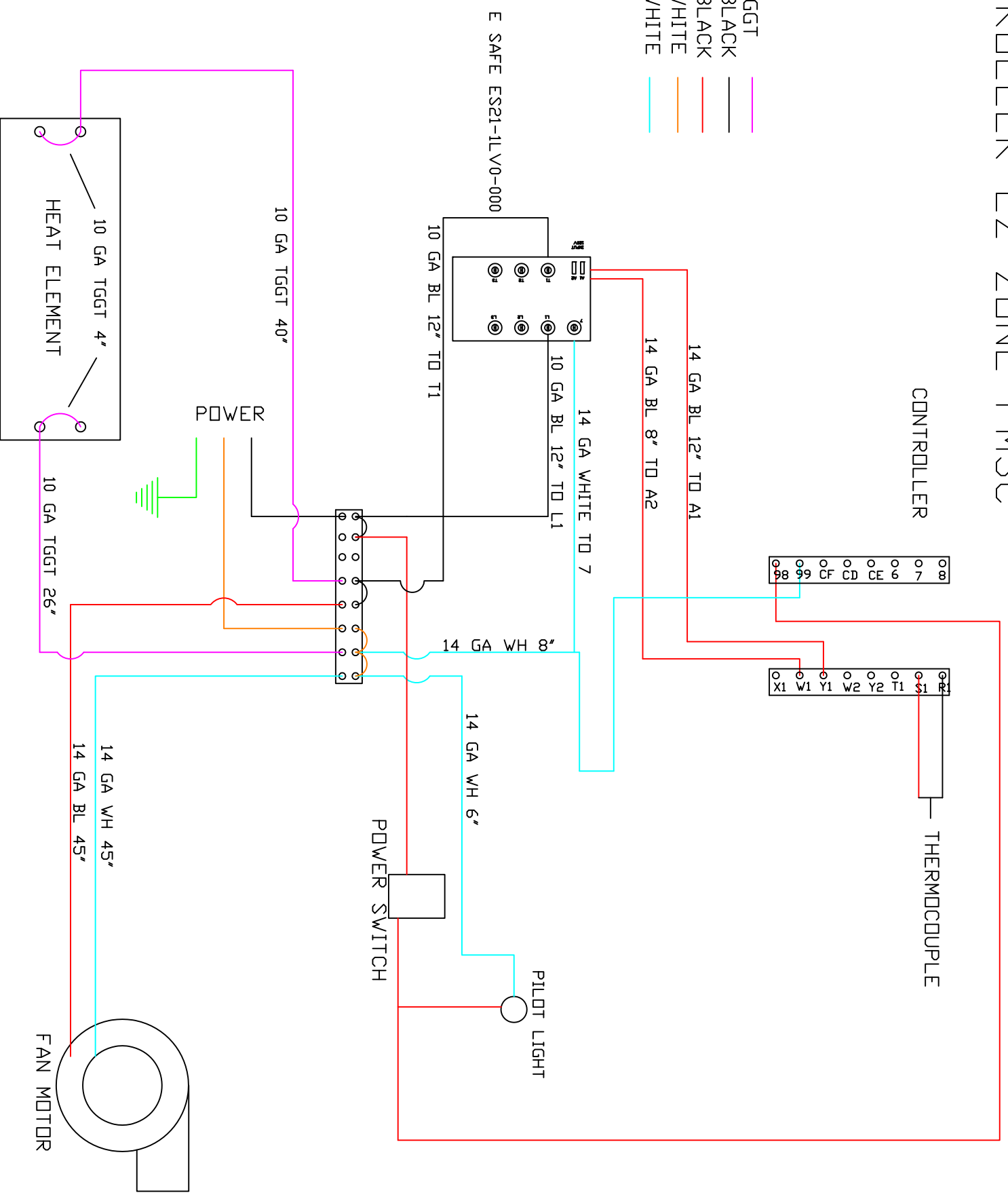
PUSH SET & **ARROW UP** TO SET OPERATING TEMP AT **240*** & RELEASE

CHANGING PROGRAM AFTER PROGARMING

1. ENTER SETUP BY PRESSING **UP & DN** SIMULTANEOUSLY FOR 3 SECONDS
- 2.**CNFG** APPEARS – HOLD SET & **ARROW UP 1** TO **YES** – RELEASE
- 3.**TAG** SHOWS – HOLD SET & **ARROW UP 1** TO **BLANK** – RELEASE
- 4.EXIT SETUP – HOLD BOTH **ARROW UP & DN** FOR 3 SECONDS
- 5.RE-ENTER SETUP MENU & START AT LINE 3 TO CHECK / CHANGE SETTINGS

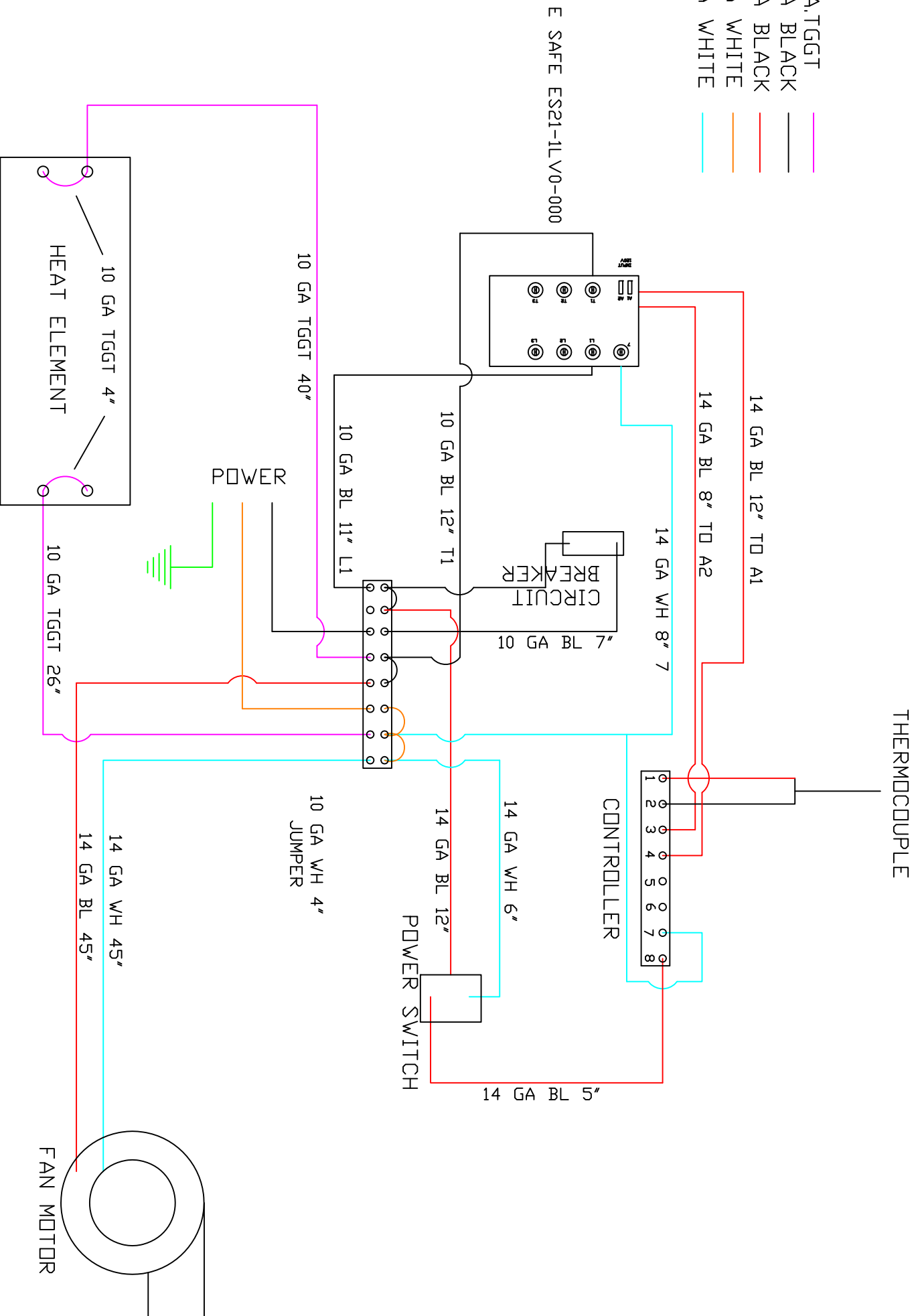
H5 WIRING DIAGRAM FOR E SAFE RELAY CONTROLLER EZ ZONE PM3C

- 10 GA.TGGT —
- 10 GA BLACK —
- 14 GA BLACK —
- 10 GA WHITE —
- 14 GA WHITE —



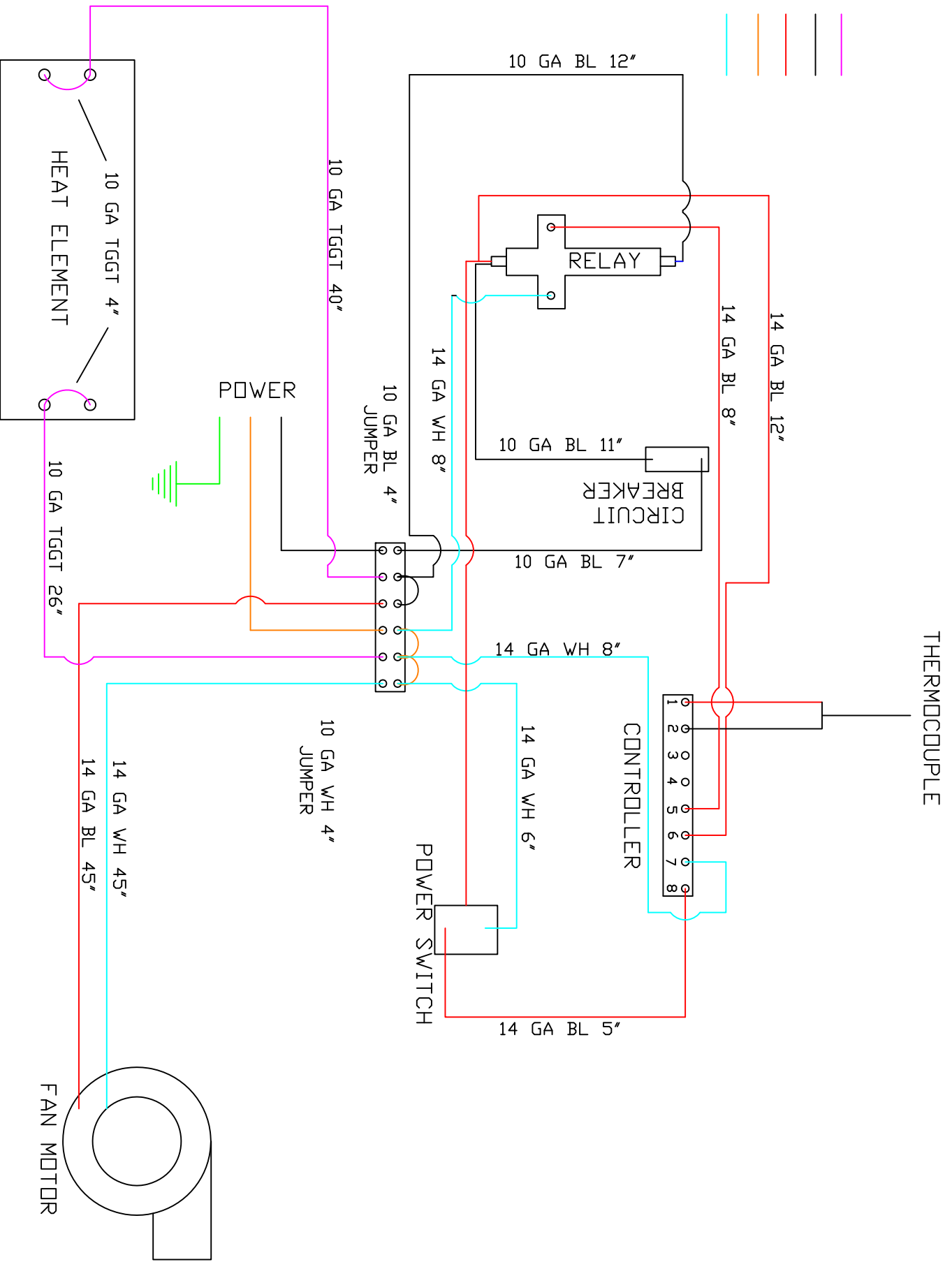
H5 WIRING DIAGRAM FOR E SAFE RELAY CONTROLLER 935A-1CC0-000G

- 10 GA. TGGT —
- 10 GA BLACK —
- 14 GA BLACK —
- 10 GA WHITE —
- 14 GA WHITE —



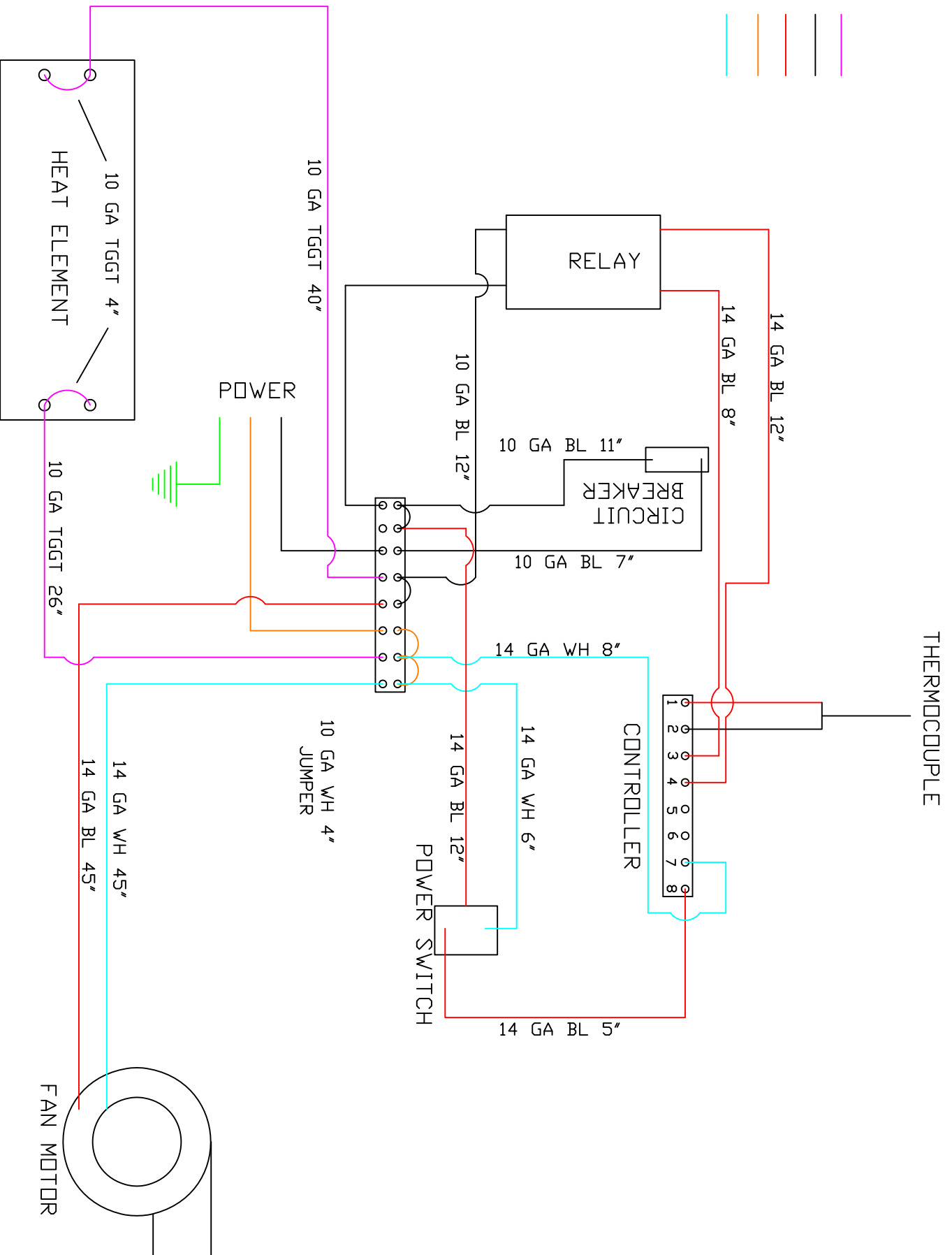
H5 WIRING DIAGRAM MERCURY RELAY

- 10 GA, TGGT
- 10 GA BLACK
- 14 GA BLACK
- 10 GA WHITE
- 14 GA WHITE

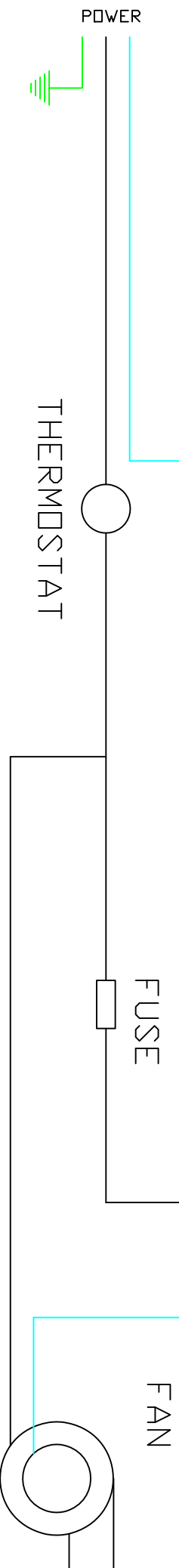


H5 WIRING DIAGRAM OLD CONTROL

- 10 GA. TGGT
- 10 GA BLACK
- 14 GA BLACK
- 10 GA WHITE
- 14 GA WHITE

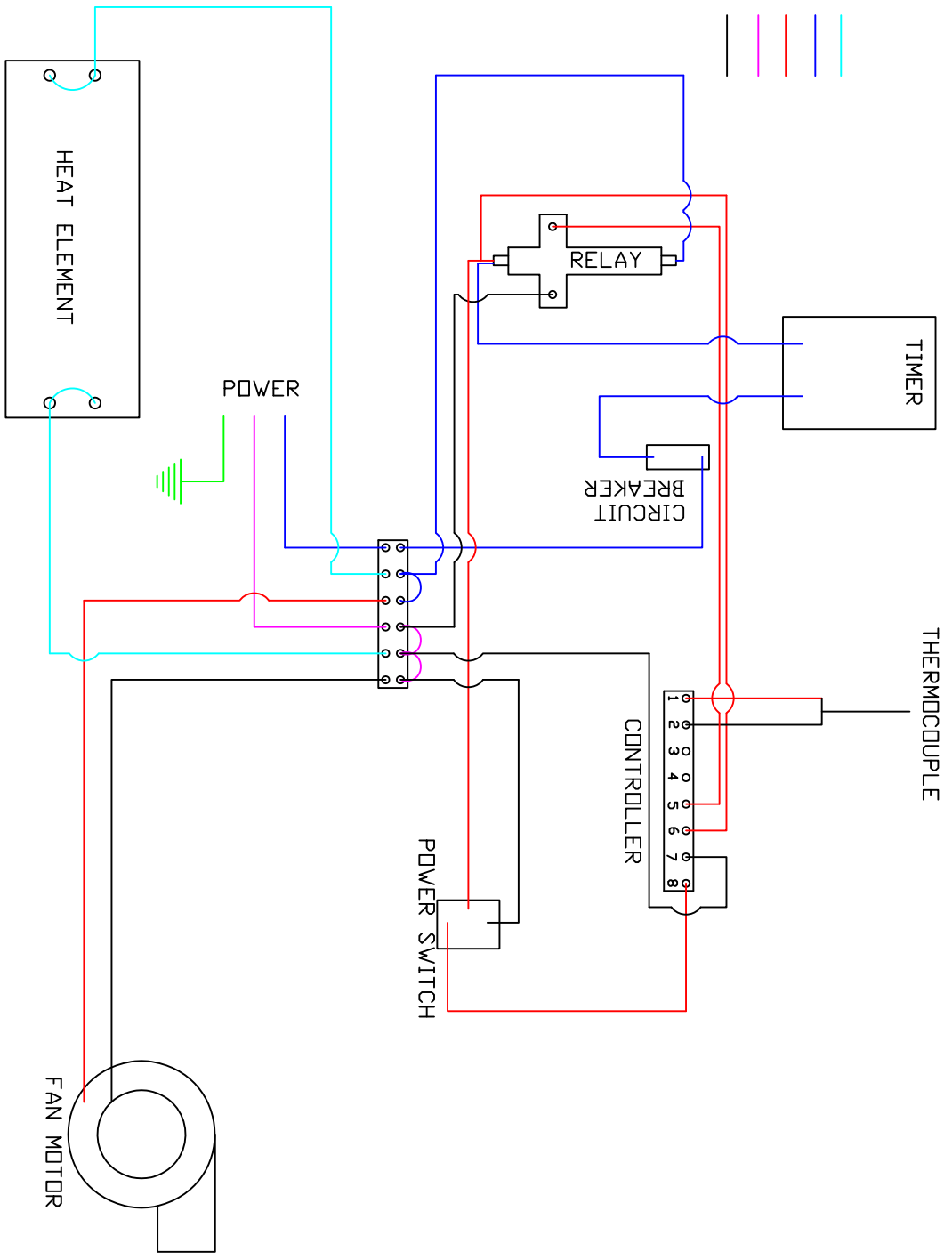


HS WIRING DIAGRAM FOR THERMOSTAT STYLE CABINET



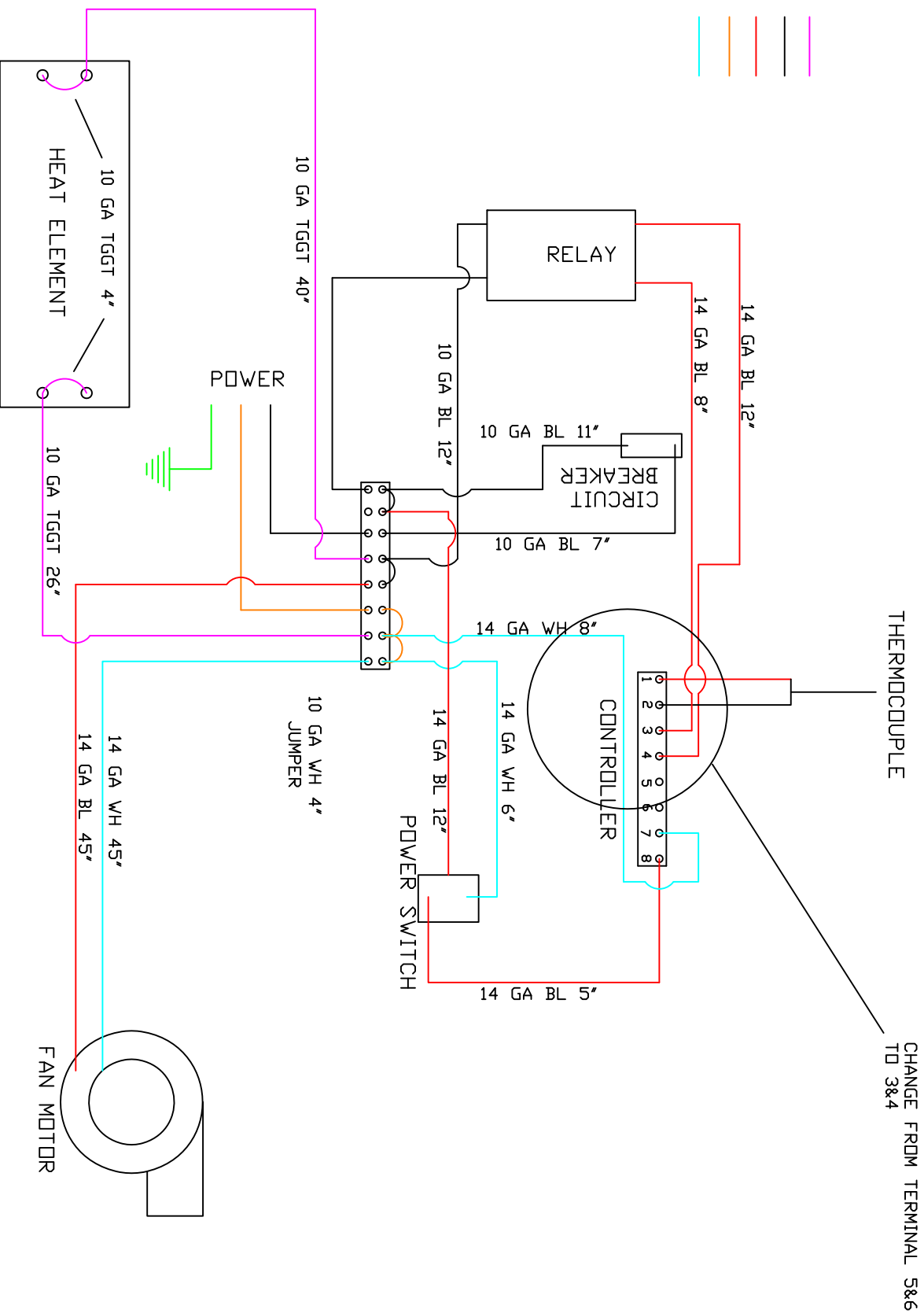
H5 WIRING DIAGRAM TIMER OPTION

- 10 GA TGGT
- 10 GA BLACK
- 14 GA BLACK
- 10 GA WHITE
- 14 GA WHITE



H5 WIRING DIAGRAM TO CHANGE FROM MERCURY RELAY TO DC RELAY

- 10 GA. TGGT
- 10 GA BLACK
- 14 GA BLACK
- 10 GA WHITE
- 14 GA WHITE



H5 WIRING DIAGRAM FOR E SAFE RELAY CONTROLLER CVBCHH00320225D

